



# **Nursing in MSF: Who cares?**

Medical debate  
OCB GATHERING\_2018

12 May  
**Florence  
Nightingale**

*The lady with the lamp*





**Infection prevention**



**Patient assessment**



**Self care**



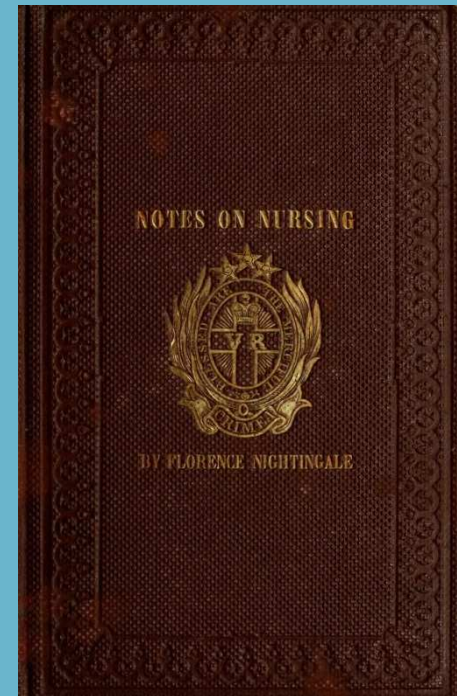
**Therapeutic communication**




**Spiritual nursing**



**Public health advocacy**





**The mother  
of modern  
nursing**

# Nursing care, now.

Source: WHO Global Strategic Directions for Strengthening Nursing and Midwifery 2016–2020



Health workers  
43.5 million

Nurses & midwives  
20.7 million

**Nursing and midwifery make up almost half the global health workforce, are at the center of most health teams, and have a massive impact on health.**

Caird JRR, Kavanagh J, Sutcliffe K, et al. The socioeconomic value of nursing and midwifery: a rapid systematic review of reviews. London: EPPI Centre, Social Science Research Unit, Institute of Education, University of London, 2010.



**8 843**

nurses in the field

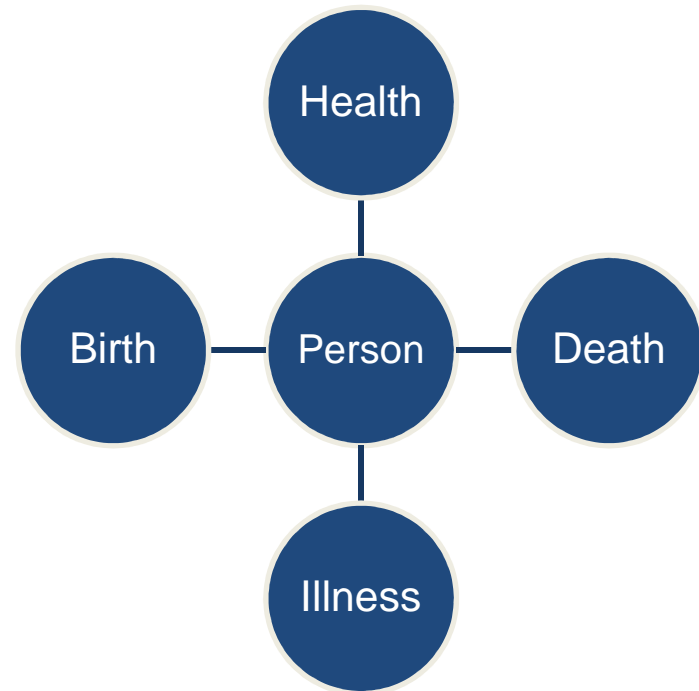
- Almost 1/5 of the entire HR
- 90% is national staff



# The reality of the field



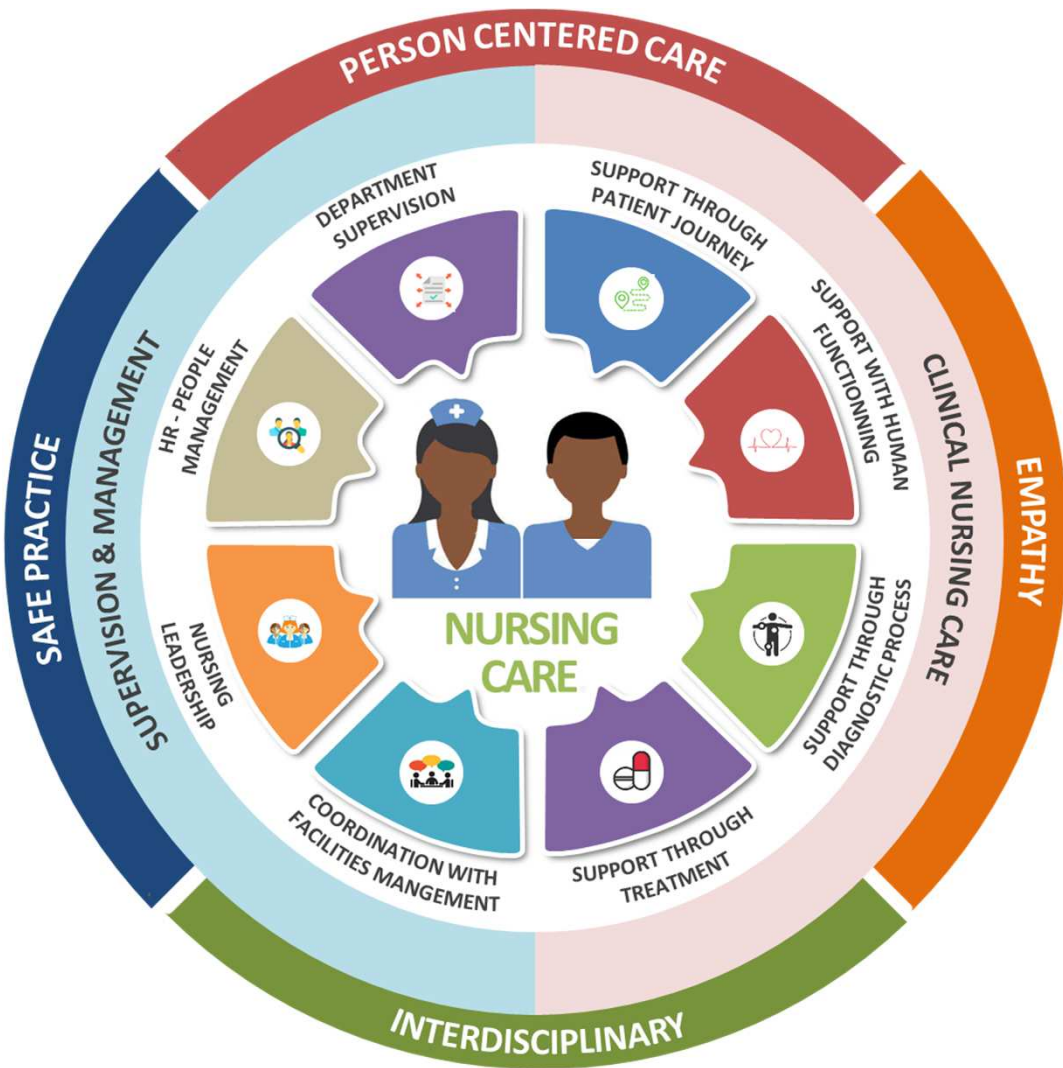
What  
**NURSING CARE**  
is?







What  
nursing care  
is  
in **MSF**?



## SUPPORT THROUGH PATIENT JOURNEY



### MANAGING THE PATIENT'S JOURNEY FROM ASSESSMENT TO DISCHARGE



- Admission evaluation
- Coordination of care
- Patient advocacy
- Infection prevention in nursing
- Patient/family education
- Support in self-management
- Discharge planning

## SUPPORT WITH HUMAN FUNCTIONING



### SUPPORTING THE PATIENT WITH HUMAN FUNCTIONING



- Communication
- Respiratory care
- Circulation and blood transfusion
- Nutrition and fluid balance
- Elimination
- Moving and positioning
- Patient comfort and end-of-life care

## SUPPORT THROUGH DIAGNOSTIC PROCESS



### SUPPORTING THE PATIENT THROUGH THE DIAGNOSTIC PROCESS



- Diagnostic tests
- Observation

## SUPPORT THROUGH TREATMENT



### SUPPORTING THE PATIENT THROUGH TREATMENT



- Medicine management
- Perioperative care
- Vascular access devices: insertion and mgt
- Wound care
- Enteral devices: insertion and management

# Purpose of the framework



To define the range of **skills, knowledge and competencies** expected of those providing nursing care



To communicate about the range of roles and **incremental complexity of competencies** required to fulfil increasing levels of responsibility.



To assist in a variety of situations such as deciding on **curriculum content**, negotiating **skill mix** and developing **job descriptions**.



To help evaluate and manage the introduction of **new or changing roles and responsibilities**.



Thank you



# **Nursing in MSF: Who cares?**

Medical debate  
OCB GATHERING\_2018